

# TRANSFORMING WORKSPACES FOR THE MODERN WORKDAY

8 AM 

## GETTING STARTED

Current pain point: Clutter affects concentration



“When my desk is a mess, I cannot work.”

Female, Switzerland, Age 25-29<sup>1</sup>

### TRANSFORMED WORKSPACE SOLUTION:

One set of peripherals, no matter how many devices an employee uses



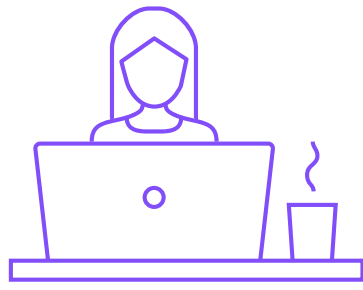
Multi-OS compatible, enterprise-grade mice and keyboards from the **Logitech for Business** lineup save space in any setup while keeping connections secure.

- **Easy-Switch™** button to work on up to three computers
- **Cross-computer and OS control** and file sharing with Logitech Flow technology
- **One Logi Bolt Receiver** can be paired with up to six Logi Bolt products



Logi Bolt USB Receiver

1 PM 



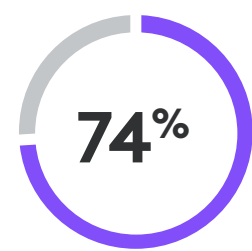
## WHILE WORKING

Current pain point: Demanding workloads are a source of overwhelm

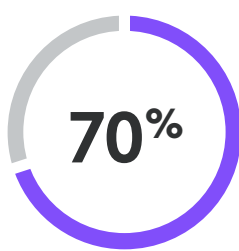
“Getting more work to do on short notice is a pain point.” Female, Switzerland, Age 35-40<sup>1</sup>



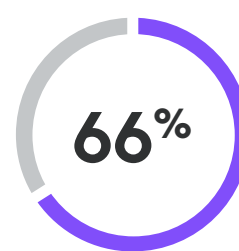
GLOBAL WORKERS REPORT THE FOLLOWING AREAS NEGATIVELY AFFECTED THEIR WORK PERFORMANCE SINCE THE START OF THE PANDEMIC:



Mental health<sup>2</sup>



Long work hours<sup>2</sup>



Remote work setup<sup>2</sup>

### TRANSFORMED WORKSPACE SOLUTION:

Software that empowers employees to streamline their workflow and get things done however they work best



**Logi Options+ software** allows end users to customize and configure buttons and keys to perform their most common and repetitive tasks, adjust their scrolling experience, and optimize their cursor speed.

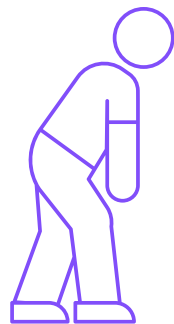


Signature M650 for Business



Productivity loss linked to absenteeism cost employers:

**\$1,685** per employee annually<sup>3</sup>



7 PM 

## FINISHING UP

Current pain point: Long workdays leave employees feeling burnt-out

“My back, eyes, wrist, and neck [pain] annoy me the most.”

Male, Spain, Age 25-29<sup>1</sup>

### TRANSFORMED WORKSPACE SOLUTION:

Ergonomic tools that are developed, designed, and engineered for all-day comfort in a business setting



**Logitech Lift Vertical Ergonomic Mouse for Business**, for both left- and right-handed users, places hands in a natural handshake position. A 57° degree angle reduces muscle strain by 10 percent and promotes a more ergonomic posture.<sup>4</sup>

Lift Vertical Ergonomic Mouse



Learn more about transforming for workspace wellness at

<https://www.logitech.com/business/resources/workspace-wellness.html>

Sources:

<sup>1</sup> “Innovation Project: Beyond Mice and Keyboards,” ZHAW, Jacqueline Burkhardt, Jazmin Diaz Martinez, Jakob Gideon, Scott Kelso Oliver, Longshen Li, supervised by Albena Björck and Logitech Creativity & Productivity Business Unit, 2021.  
<sup>2</sup> “Global Employee Health Study,” Aetna International, 2020.  
<sup>3</sup> “Worker illness and injury costs US employers \$225.8 billion annually,” Centers for Disease Control and Prevention, 2015.  
<sup>4</sup> Logi Ergo Lab research, Logitech, as compared to a traditional non-vertical mouse.